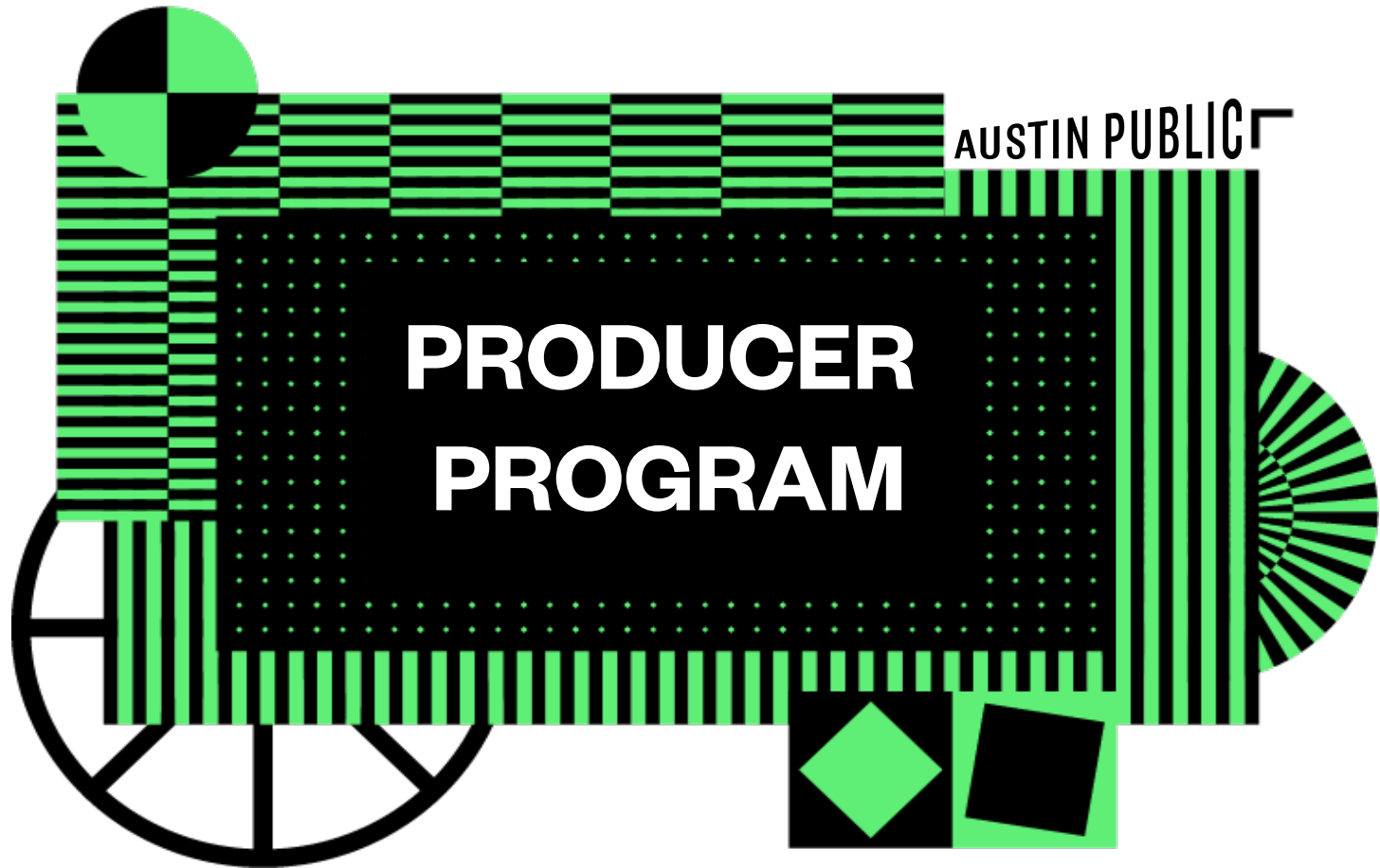




**AUSTIN
FILM
SOCIETY**



AUSTIN PUBLIC



AUSTIN
FILM
SOCIETY



HOURS:

Monday – Thursday
12-10pm

Friday & Sunday
11am-7pm

Closed Saturdays

ADDRESS:

1143 Northwestern Ave.
Austin, TX
78702

THE PRODUCER PROGRAM

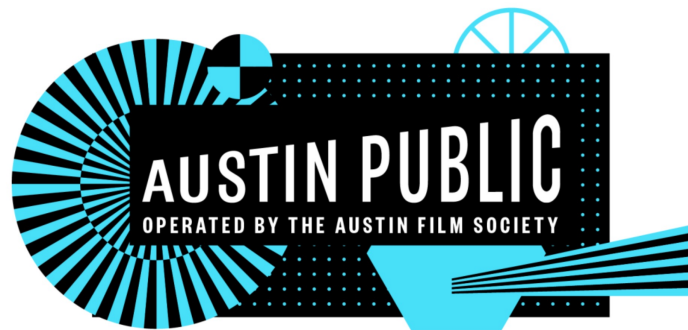


AUSTIN
FILM
SOCIETY

WHAT IS A PRODUCER?

A PERSON THAT IS...

- ✓ A member of the Producer Program
- ✓ 15 years of age or older
- ✓ Residing within the Austin metropolitan area
- ✓ Certified to use the video production resources at Austin Public, which is optional
- ✓ Sharing at least a portion of the content created with Austin Public's resources onto the Public Access channels and streaming services



WHAT WE PROVIDE



AUSTIN
FILM
SOCIETY

- A community of content Producers
- Networking opportunities
- Production equipment and training:
 - ✓ cameras
 - ✓ microphones
 - ✓ light kits
 - ✓ grip gear
 - ✓ camera rigs
 - ✓ editing computers
- 3 Studios
- Audio production suite
- Conference room
- Content distribution (cable tv and streaming)
- Live programming (onsite and remote)



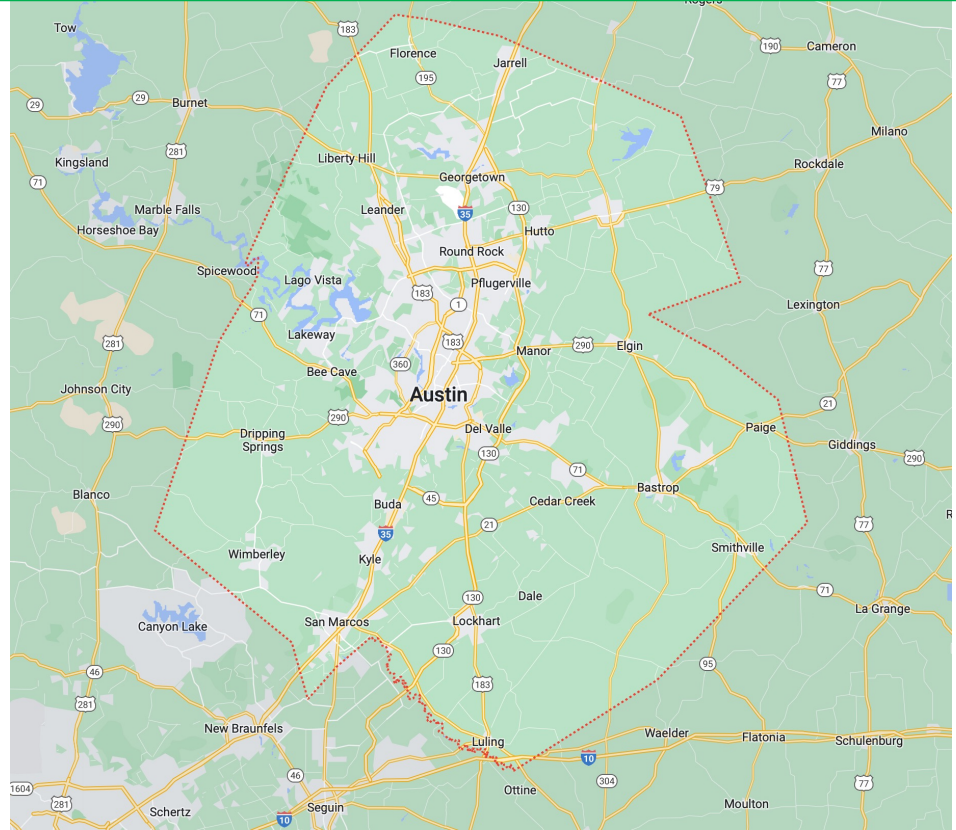
PROGRAM SERVICE AREA



FOR RESIDENTS WITHIN:

- Travis County
- Williamson County
- Bastrop County
- Hays County
- Caldwell County

(Austin's Metro Area)

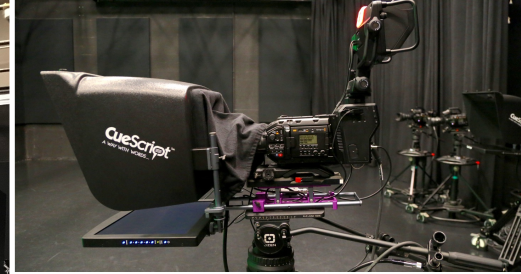


INTERIOR SPACES



STUDIO 1

1200 sq ft



STUDIO 2

340 sq ft



STUDIO 3
Video Podcasting



AUDIO BOOTH



HOW TO JOIN THE PROGRAM



AUSTIN
FILM
SOCIETY

3 STEP START UP PROCESS:

COMPLETE THE ORIENTATION PROCESS



STEP 1:

WATCH OUR **ORIENTATION VIDEO** &
DOWNLOAD **THE HANDOUT**



STEP 2:

COMPLETE THE **INTAKE FORM**



STEP 3:

ATTEND A **MEDIA POLICY CLASS**

You are here!

HOW TO JOIN THE PROGRAM



AUSTIN
FILM
SOCIETY

COMPLETE THE ORIENTATION PROCESS



STEP 1:

WATCH OUR **ORIENTATION VIDEO** &
DOWNLOAD **THE HANDOUT**



STEP 2:

COMPLETE THE **INTAKE FORM**



STEP 3:

ATTEND A **MEDIA POLICY CLASS**

Complete all 3 steps....

You will then...

- Become an active Producer within the program
- Receive your Producer Portal Login
- Can submit content for distribution
- Can sign up for Resource Certification classes

ACCESS TO RESOURCES



AUSTIN
FILM
SOCIETY

OPTION 1

MONTHLY
\$12/month

Auto-renews monthly

OR

OPTION 2

ANNUAL
\$120/yr

Auto-renews yearly

OR

OPTION 3

**ANNUAL
SCHOLARSHIP**

Must qualify financially

Pay subscription
Fee

STEP 4.

***Airing content is free, but you will only have access to content distribution and not gear or studio space. Elect to be a “content only” Producer when filling in the online intake form.**

- Subscription payments auto renew either monthly or yearly
- Monthly subscription can be cancelled anytime , Yearly can be cancelled prior to annual renewal
- Email or call staff to cancel - austinpublic@austinfilm.org

HOW TO JOIN THE PROGRAM



AUSTIN
FILM
SOCIETY

Complete Step #4....



You will then receive...

- Access to the conference room
- Access to take-home computers & the edit lab
- Access to the Audio Production Suite
- Access to all other gear and studios you've been certified to use through our training classes

THE PRODUCER PROGRAM



AUSTIN
FILM
SOCIETY

Complete steps 1 - 3 to join

Complete Resource Certification Class(es)

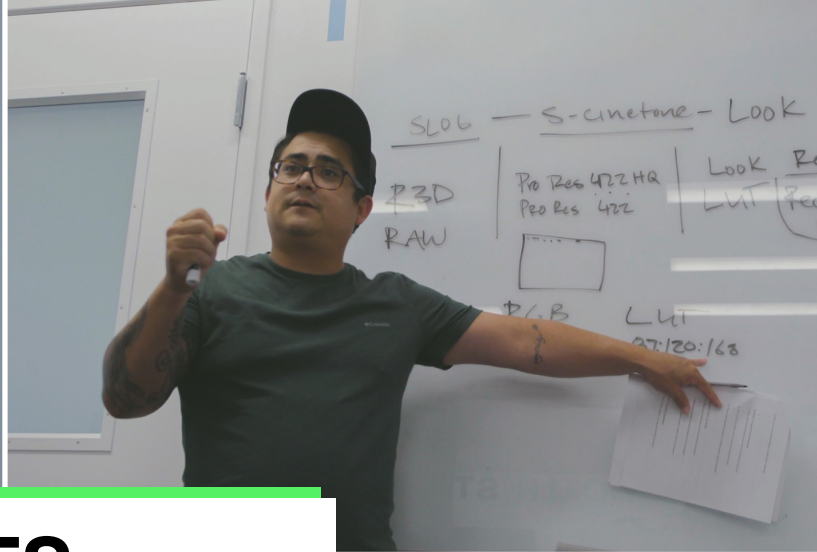
Subscription payment or scholarship

Checkout Gear
And/or Studios
No rental fee

Create
Content
you own it

Provide us
Content
we distribute it





CLASSES





Screenings & Events ▲

Join & Give ▼

Tickets

Calendar

Search

Donate

Rentals & Facilities ▼

AFS Cinema

Austin Public

Austin Studios

About ▼

Screenings

Classes & Events

2024 Toast to Texas Film

Texas Film Hall Of Fame

Gift Cards

Calendar

CLASSES & EVENTS

<p>Fri, Apr 12 5:30 PM - 6:30 PM</p> <p>AUSTIN PUBLIC STUDIO CREW CERTIFICATION</p> <p>Resource Certification</p>	<p>Mon, Apr 15 7:00 PM - 8:00 PM</p> <p>ORIENTATION FOR THE PRODUCER PROGRAM</p> <p>Online</p>
<p>Wed, Apr 17 6:00 PM - 8:30 PM</p> <p>WORKS-IN-PROGRESS: CARNAGE RADIO</p> <p>In-Person</p>	<p>Wed, Apr 17 6:30 PM - 9:30 PM</p> <p>BLACKMAGIC DESIGN MULTI-CAMERA PRODUCTION</p> <p>In-Person</p> <p>Resource Certification</p>
<p>Thu, Apr 18 5:00 PM - 10:00 PM</p> <p>STUDIO 1 TRAINING (SPACE ONLY)</p> <p>In-Person</p> <p>Resource Certification</p>	<p>Thu, Apr 18 6:00 PM - 10:00 PM</p> <p>INTERMEDIATE EDITING WITH ADOBE PREMIERE</p> <p>In-Person</p> <p>Continuing Education</p>

INTERMEDIATE CAMERA: SONY FX3

Register Now

Date and Time

Mon, Nov 27

6:30 PM - 9:30 PM

Price

\$50 AFS Member | \$55 Regular

Price

Location

Austin Public - Edit Lab

1143 Northwestern Ave, Austin, TX

78702

REQUIRED KNOWLEDGE

Basic understanding of camera functions (shutter speed, frame rate, ISO, white balance, iris, framing, etc) is necessary.

[Camera Classes](#) [Resource Certification Classes](#)

RESOURCE CERTIFICATION CLASS

This 3-hour onsite intermediate class provides more in-depth training on the functions of the Sony FX3 digital cinema camera and its menu system as well as hands-on practice time shooting with the camera and overview of the recording file structure and management.

This course certifies Producers in the following equipment to then reserve at no additional cost:

- Sony FX3 Full Frame 4K Cinema Camera body
- Sony 18-105 Zoom E-Mount Kit Lens and prime lenses
- Sachtler Fluid Head Tripod
- 7" monitors

If you prefer to take our basic camera class first then please look for the ["Intro to Sony Cameras: Functions and Fundamentals"](#) class.

RESOURCE CERTIFICATION CLASSES



AUSTIN
FILM
SOCIETY

CLASS NAMES	TYPE OF RESOURCES
Intro to Sony FX Line: Functions & Fundamentals	Cameras, tripods, lenses, monitors
Intermediate Camera (various)	Camera, tripods, lenses, monitors
Blackmagic Multi-Cam Production	Blackmagic multi-camera kits
Intro to Field Audio	Field audio equipment (not including larger mixers)
Intermediate Field Audio	Larger audio mixers and podcasting kits
Intro to Lighting & Grip	All lighting and grip gear
Intro to Rigs & Stabilizers	All rigs and stabilizer gear
Studio 1, 2, 3 / Crew	Access to whichever studio was trained

These “Resource Certification” classes are required to gain access to that type of gear

RESOURCE CERTIFICATION CLASSES



AUSTIN
FILM
SOCIETY

EQUIPMENT CLASSES: To gain access to field production equipment

Producers may complete individual equipment classes based on their production needs

- \$40 - \$65 per class, take only once (discounts for **AFS Members**)
- Single day, 3 – 5 hours total

STUDIO CLASSES: To gain access to the studios

- **Studio Three:** 3-hour class (Small office-sized podcast space with 3 cameras)
- **Studio Two:** 8-hour class (Talk show sized 340sq ft. studio with 3 cameras)
- **Studio One:** 10-hour class (1200sq ft. studio with 7 cameras)
 - \$40 - \$70 per class, take only once (discounts for **AFS Members**)
 - 1 or 2-day classes, ranging between 3 - 10 hours

All resource certification classes are taught at least once a month

CONTINUING EDUCATION CLASSES



AUSTIN
FILM
SOCIETY

PRE-PRODUCTION

- Pre-Production Planning
- Intro to Storytelling
- Screenwriting 101

PRODUCTION

- Field Lighting Techniques
- Cinematography Techniques
- Hands-On Lighting Workshop
- Pro Indie Set Etiquette
- Live Audio Mixing
- Directing 101

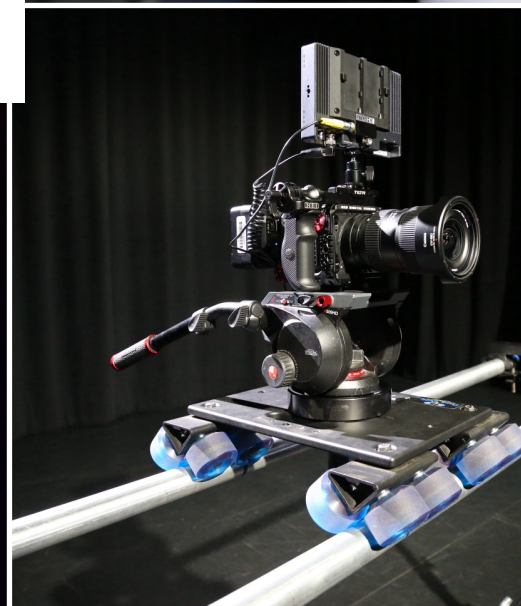
POST-PRODUCTION

- Pro Tools
- Adobe Premiere
- Adobe After Effects
- Adobe Creative Suite
- Post-Prod. Workflow
- Intermediate Editing
- Blender (3D Animation)
- DaVinci Resolve

These classes are optional and for professional development. Taught every 2-6 months.



EQUIPMENT



CAMERAS



AUSTIN
FILM
SOCIETY

Intro Sony FX Line Class

Taught twice a month



SONY FX3 (4K)



SONY FX6 (4K)



SONY FX 9 (4K)

Intermediate Camera Classes

Rotated each month, 2-3 per month



RED KOMODO (6K)



SONY FX3 (4K)



BLACKMAGIC POCKET
CAMERA (6K)



SONY FX 9 (4K)



SONY FX6 (4K)

Multi-Cam Class

Every other month



BLACKMAGIC DESIGN
PRODUCTION KIT

CAMERAS



AUSTIN
FILM
SOCIETY

No longer trained

Certification provided with any camera class



Sony Z280



Sony A7Sii



Sony FS5



Canon 5D Mark III

OTHER GEAR & STUDIOS



AUSTIN
FILM
SOCIETY

WHEN AND HOW CAN I RESERVE?

- Within 30 days... but...
- With a 24-hour notice
- Submitted via your Producer Portal

HOW LONG CAN I RESERVE?

- Field production Equipment: 1-5 days
- Field editing equipment: 1-10 days
- Studios: 1-5 hours
- 48-hours between reservations for same resource



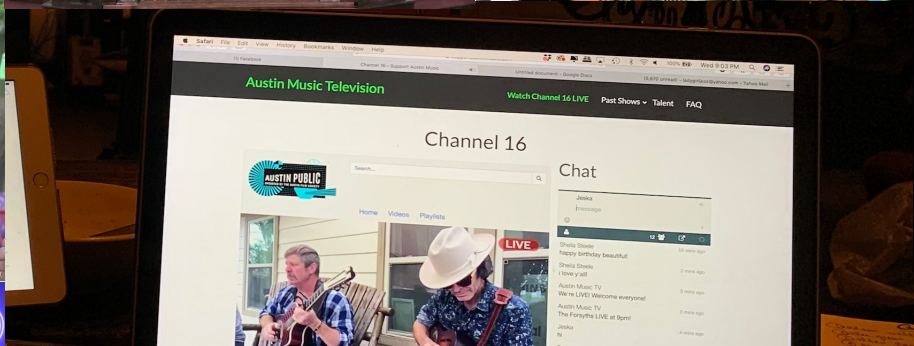
Lighting



Audio



Grip and Rigs



Like Minded Lunatics

CONTENT



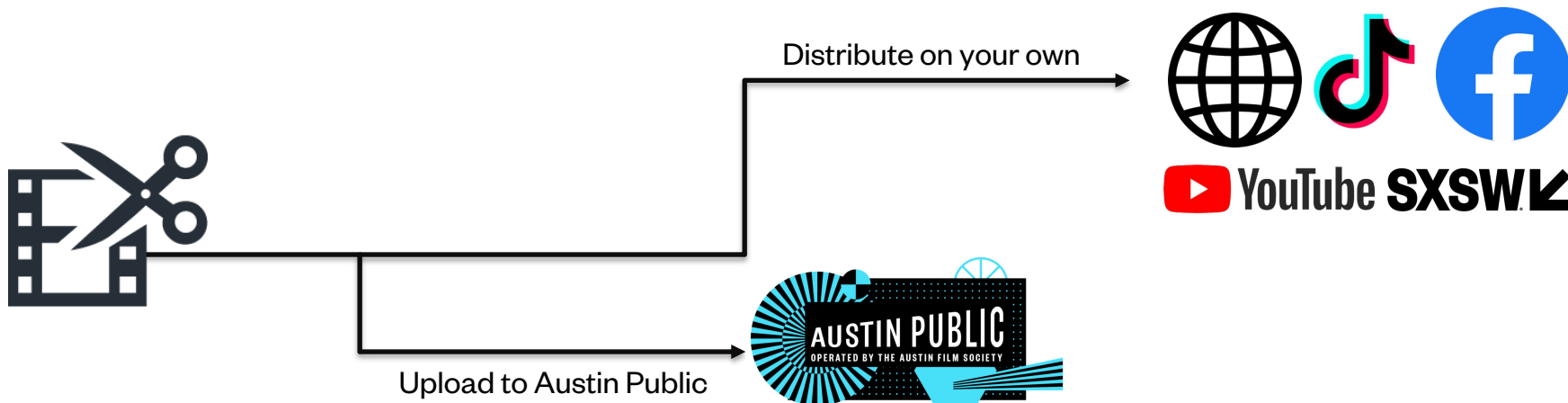
DISTRIBUTION



AUSTIN
FILM
SOCIETY

Producer Content Policy :

Producers are responsible for submitting content (in its entirety or a portion) created with Austin Public resources to air on Austin Public's distribution platform before distributed through other platforms. **Producer owns all content created with Austin Public resources.**



DISTRIBUTION OPTIONS



AUSTIN
FILM
SOCIETY



AUSTIN
FILM
SOCIETY

AUSTINFILM.ORG/AUSTIN-PUBLIC/WATCH



ANDROID PHONE APP



Spectrum



STREAMING SERVICES

Astound
Broadband
Powered by GRANDE



APPLE IPHONE IOS APP



TYPES OF CONTENT

INDEPENDENT SHOWS

- Content of any length
- Programmed at our discretion or a Producer can request an airdate
- No cost

SERIES

A show that airs on the same day, time and channel for 4 months

- Total run time of 28:30, 58:30, 1:28:30 or 1:58:30
- Price ranges from \$10-\$25 for the 4-month Series
- The three Series Seasons:
 - Summer Season June 1 to September 30
 - Fall & Winter Season October 1 to January 31
 - Spring Season February 1 to May 30

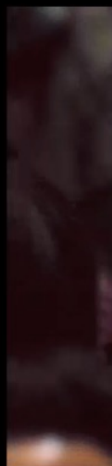
What would you like to share with your community?

CONTENT EXAMPLES:

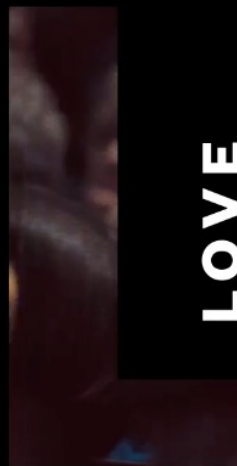
- Creating a feature film and uploading just the trailer
- Streaming or recording a musical performance
- Recording a high school graduation and uploading an edited version
- Streaming or recording a church service
- A live or pre-recorded video podcast
- Creating a TV pilot and editing and uploading a scene
- A live studio comedy or talk show
- Recording a D&D game and editing and uploading the best parts
- A "how to" show (art, workouts, starting a small business, etc.)
- Music Videos



MAKE



WATCH



LOVE



AUSTIN PUBLIC

[About Austin Public](#)[Become A Producer](#)[Austin Public Resources](#)[Watch Austin Public](#)[Series Application](#)[Producer Portal Login](#)[Training Videos](#)

**FOR INFO ON OUR CURRENT OPERATIONS
PLEASE GO **HERE**.**

Please contact **Charles Wright** for questions about equipment drop off and live shows/series. Please contact **Elias Posada** for questions regarding classes and producer program.

AUSTIN PUBLIC



Committed to freedom of speech and expression, Austin Public is a non-exclusive and content-neutral media studio that offers low- and no-cost training, equipment, facilities, and content distribution services to all Austinites. Its programs empower individuals and nonprofit organizations to create film and media projects that speak to the local community, facilitate community building, and diversify the media landscape. Austin Public operates cable channels 10, 11, and 16 (cable channel 10 being the longest continually running public access station in the country) and simultaneously streams the channels. Austin Public also provides video-on-demand and over the top distribution services. Find our streams and video-on-demand content [here](#).





Screenings & Events ▾
Community Programs ▾
Filmmaker Support ▾

Join & Give ▾
Rentals & Facilities ▾
About ▾

Tickets Calendar Search [Donate](#)
AFS Cinema Austin Public Austin Studios

AUSTIN PUBLIC RESOURCES

Available through our [Filmmaker Support Program](#) (Click red links for full list of resources)



[About Austin Public](#) [Become A Producer](#) [Austin Public Resources](#) [Watch Austin Public](#) [Series Application](#) [Producer Portal Login](#) [Training Videos](#)



CONTENT DISTRIBUTION



PRODUCTION & MEETING SPACES



CAMERAS & TRIPODS



LIGHTING, FLAGS, SCRIMS & BACKDROPS



AUDIO GEAR



MULTI-CAM & PODCASTING KITS



Screenings & Events ▾
Community Programs ▾
Filmmaker Support ▾

Join & Give ▾
Rentals & Facilities ▾
About ▾

Tickets

Calendar

Search

Donate

AFS Cinema

Austin Public

Austin Studios

WATCH AUSTIN PUBLIC



[About Austin Public](#)

[Become A Producer](#)

[Austin Public Resources](#)

[Watch Austin Public](#)

[Series Application](#)

[Producer Portal Login](#)

[Training Videos](#)

AUSTIN PUBLIC 10

AUSTIN PUBLIC 11

AUSTIN PUBLIC 16



AUSTIN PUBLIC 10

AUSTIN PUBLIC 11

AUSTIN PUBLIC 16

Tuesday 08/16/2022

Time	Program	Duration
12:00 AM	Cooking Good: ckgdrarebit002	00:58:44

HOW TO CONTACT US

- [\(512\) 322-0145](tel:5123220145)
 - Ext. 3241 for Equipment Room
 - Ext. 3235 for General inquiries
- austinpublic@austinfilm.org (Coordinator)

